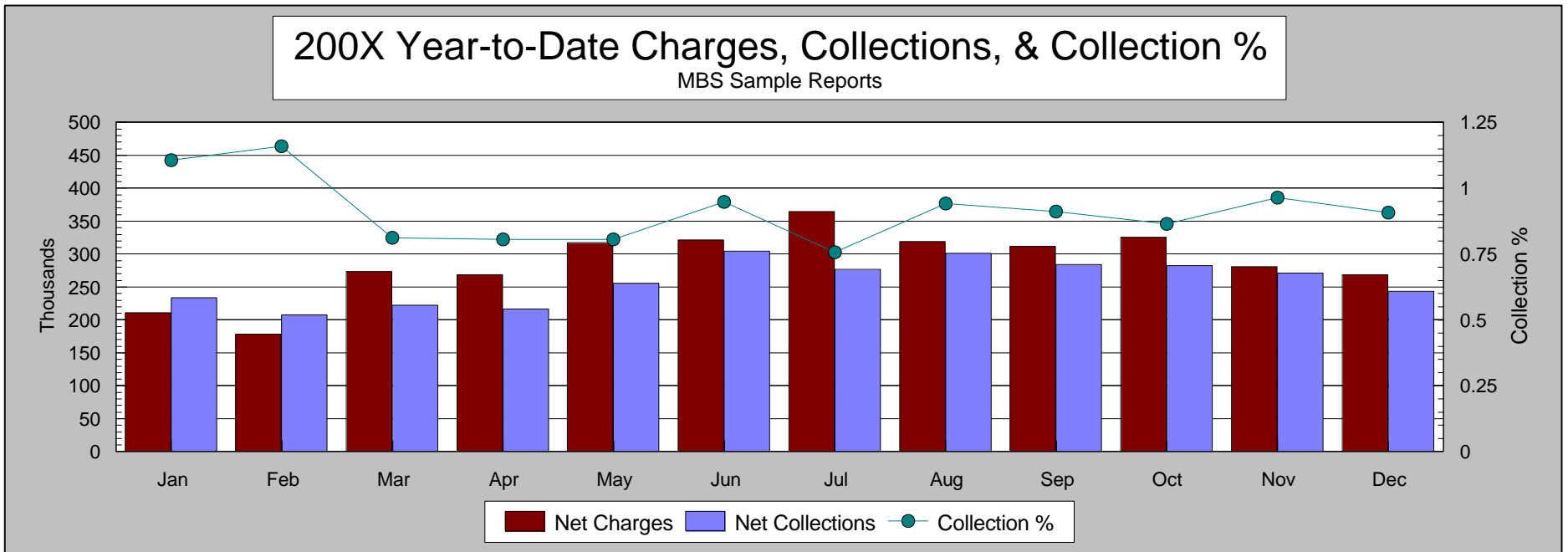


MBS Sample Reports

Year-to-Date Charges, Collections, and Collection Percentages

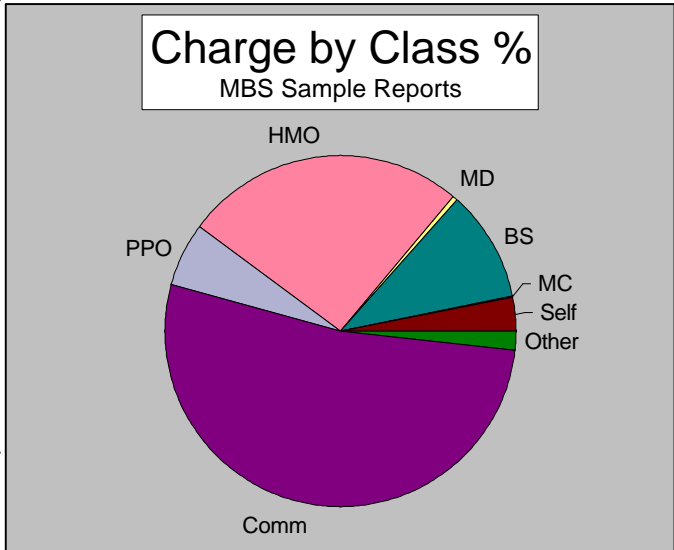
Dec-200X

Month	Gross Charges	Charge Adjust.	Net Charges	Gross Payments	Payment Adjust.	Net Payments	Gross-Net Col. %
Jan-200X	\$236,992	\$26,203	\$210,789	\$236,277	\$2,862	\$233,415	110.7%
Feb-200X	207,699	28,864	178,836	208,127	793	207,334	115.9%
Mar-200X	297,931	24,526	273,405	222,228	18	222,210	81.3%
Apr-200X	303,417	35,013	268,404	219,332	2,972	216,360	80.6%
May-200X	349,046	31,426	317,621	258,276	2,222	256,054	80.6%
Jun-200X	356,423	35,282	321,141	304,721	14	304,707	94.9%
Jul-200X	402,072	37,067	365,005	278,328	1,623	276,705	75.8%
Aug-200X	358,184	38,744	319,440	300,825	0	300,825	94.2%
Sep-200X	356,776	45,266	311,510	285,941	1,795	284,147	91.2%
Oct-200X	366,502	40,544	325,958	285,810	3,612	282,198	86.6%
Nov-200X	330,983	49,779	281,204	272,488	1,153	271,335	96.5%
Dec-200X	320,669	52,083	268,586	245,824	2,033	243,790	90.8%
<b>Total</b>	<b>\$3,886,695</b>	<b>\$444,795</b>	<b>\$3,441,900</b>	<b>\$3,118,177</b>	<b>\$19,097</b>	<b>\$3,099,080</b>	<b>90.0%</b>
<b>Average</b>	<b>\$323,891</b>	<b>\$37,066</b>	<b>\$286,825</b>	<b>\$259,848</b>	<b>\$1,591</b>	<b>\$258,257</b>	<b>90.0%</b>

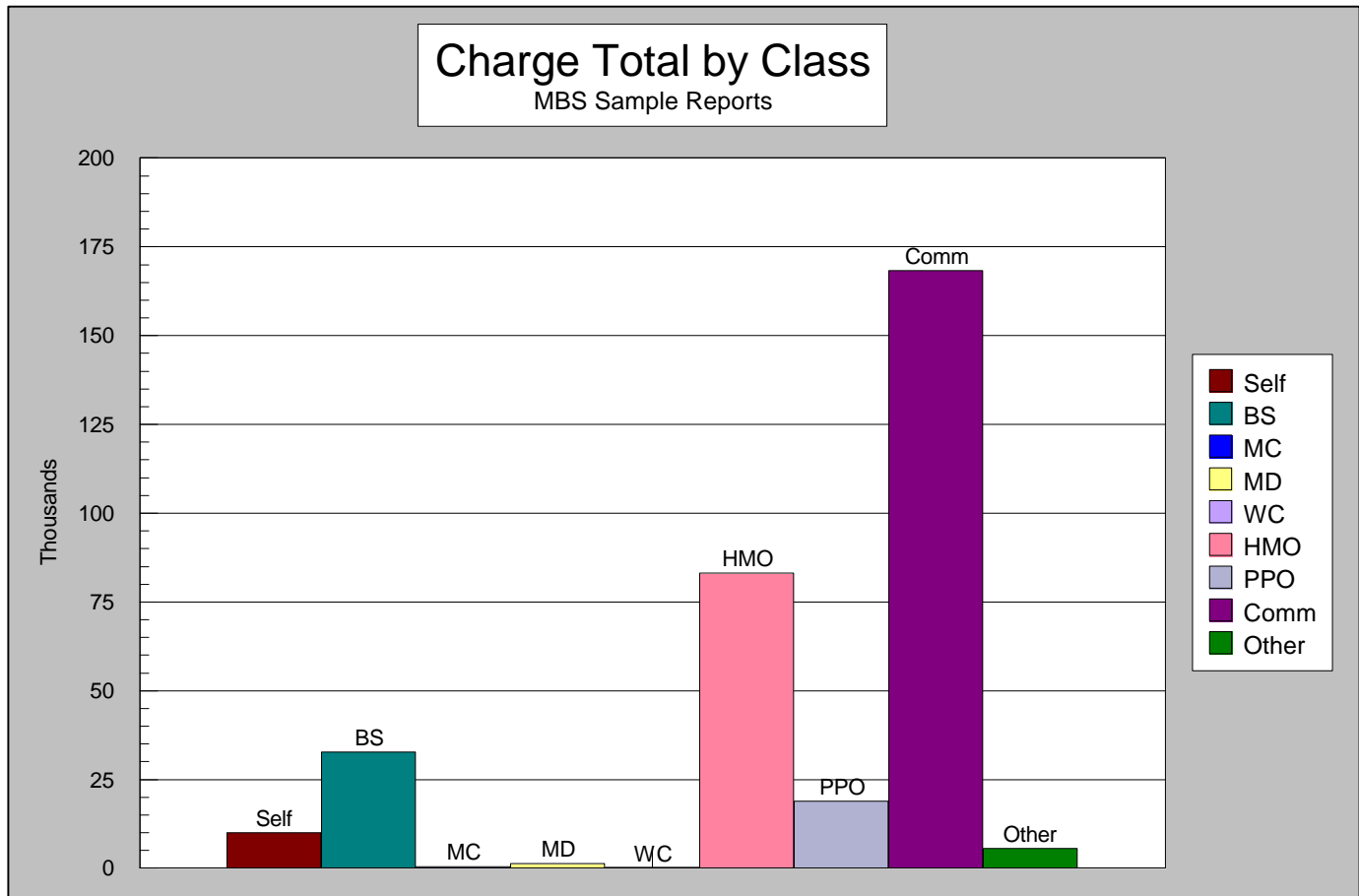


	Jan-XX	Feb-XX	Mar-XX	Apr-XX	May-XX	Jun-XX	Jul-XX	Aug-XX	Sep-XX	Oct-XX	Nov-XX	Dec-XX	Total-XX	Avg-XX
Total Procedures	7,559	7,227	9,217	7,471	11,120	9,555	10,969	9,640	9,814	10,463	10,224	10,100	113,359	9,447
Gross Charges	\$236,992	\$207,699	\$297,931	\$303,417	\$349,046	\$356,423	\$402,072	\$358,184	\$356,776	\$366,502	\$330,983	\$320,669	\$3,886,695	\$323,891
Charge Adjustments														
Bad Debt W/O	\$965	\$578	\$1,643	\$842	\$4,993	\$543	\$2,195	\$716	\$604	\$214	\$273	\$2,443	\$16,008	\$1,334
Bankruptcy W/O	(15)	221	68	92	(30)	(15)	0	(161)	45	162	185	130	682	57
Blue Shield Disc.	601	446	234	120	495	172	119	76	181	180	49	149	2,820	235
Champus Disc.	351	217	112	25	27	1,078	0	0	22	414	220	39	2,504	209
Charge Adj.	937	2,727	0	43	143	(211)	455	(45)	59	7,555	0	0	11,661	972
Charity W/O	0	0	0	0	0	0	0	0	0	0	0	0	0	0
Clinical Lab W/O	3,817	2,319	1,052	4,028	1,991	777	815	349	2,173	2,807	2,689	3,110	25,926	2,161
Courtesy Disc.	882	167	1,492	543	1,033	728	2,180	1,584	2,140	1,286	2,290	1,392	15,715	1,310
Deceased Pt. W/O	0	0	58	0	7	0	345	119	0	0	(50)	0	478	40
HMO Disc.	12,431	14,447	13,912	23,567	13,007	22,796	20,265	24,615	29,019	17,540	33,155	34,968	259,722	21,644
Medicare W/O	171	(16)	30	162	6	100	57	44	2	(1,155)	3	34	(564)	(47)
Medicaid W/O	352	143	2,682	183	743	1,008	1,408	2,290	80	3,773	109	164	12,936	1,078
Payment Transfer	15	0	(11)	0	0	0	0	0	0	0	0	0	4	0
PPO Discourt	5,212	6,654	3,109	4,840	8,093	8,166	7,833	8,070	10,755	7,602	10,707	9,066	90,108	7,509
Prof Courtesy Disc.	428	563	252	449	697	27	808	435	192	158	0	441	4,447	371
Returned Check	(28)	0	0	0	(24)	0	0	(3)	(40)	0	(35)	14	(115)	(10)
Return Check Fee	(20)	0	0	0	(20)	(20)	20	(20)	(20)	10	(20)	(10)	(100)	(8)
Trivial Balances	105	39	3	40	78	114	147	609	55	17	99	76	1,382	115
Workers' Comp.	0	248	0	81	104	0	353	0	0	2	105	69	960	80
Other	0	111	(179)	0	0	8	0	32	0	0	0	0	(28)	(2)
Bad Debt/Collect.	0	0	69	0	84	12	67	34	0	(20)	0	0	246	21
Total Charge Adjustments	\$26,203	\$28,864	\$24,526	\$35,013	\$31,426	\$35,282	\$37,067	\$38,744	\$45,266	\$40,544	\$49,779	\$52,083	\$444,795	\$37,066
Net Charges	\$210,789	\$178,836	\$273,405	\$268,404	\$317,621	\$321,141	\$365,005	\$319,440	\$311,510	\$325,958	\$281,204	\$268,586	\$3,441,900	\$286,825
Payments														
Gross Payments	\$236,277	\$208,127	\$222,228	\$219,332	\$258,276	\$304,721	\$278,328	\$300,825	\$285,941	\$285,810	\$272,488	\$245,824	\$3,118,177	\$259,848
Refunds	2,862	793	18	2,972	2,222	14	1,623	0	1,795	3,612	1,153	2,033	19,097	1,591
Net Payments	\$233,415	\$207,334	\$222,210	\$216,360	\$256,054	\$304,707	\$276,705	\$300,825	\$284,147	\$282,198	\$271,335	\$243,790	\$3,099,080	\$258,257
Net-to-Net Collection %	110.7%	115.9%	81.3%	80.6%	80.6%	94.9%	75.8%	94.2%	91.2%	86.6%	96.5%	90.8%	90.0%	90.0%

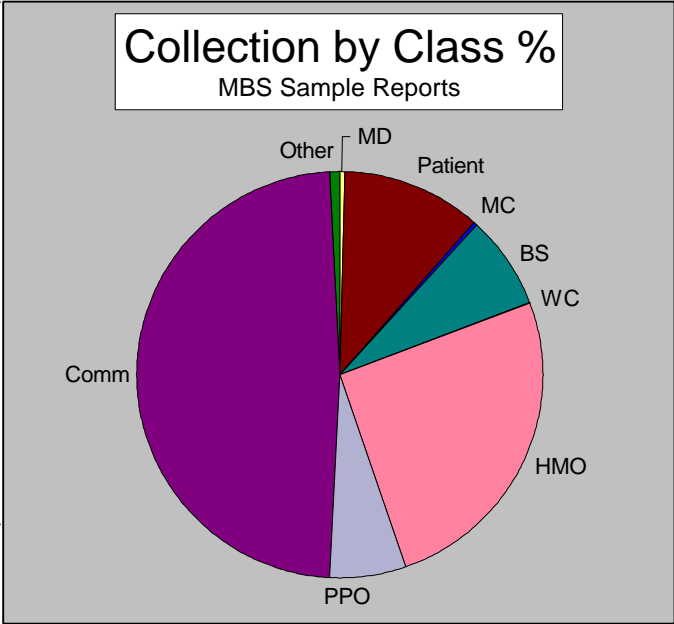
Class	Charges	Percentage
Self Pay	\$10,001	3.1%
Blue Shield	32,743	10.2%
Medicare	507	0.2%
Medicaid	1,396	0.4%
Workers' Comp.	0	0.0%
HMO	83,174	25.9%
PPO	18,817	5.9%
Commercial	168,405	52.5%
* Champus	661	0.2%
* Dr./Hosp. Billing	0	0.0%
* Spec. Billing	4,608	1.4%
* Other	358	0.1%
<b>Total Charges</b>	<b>\$320,669</b>	<b>100.0%</b>



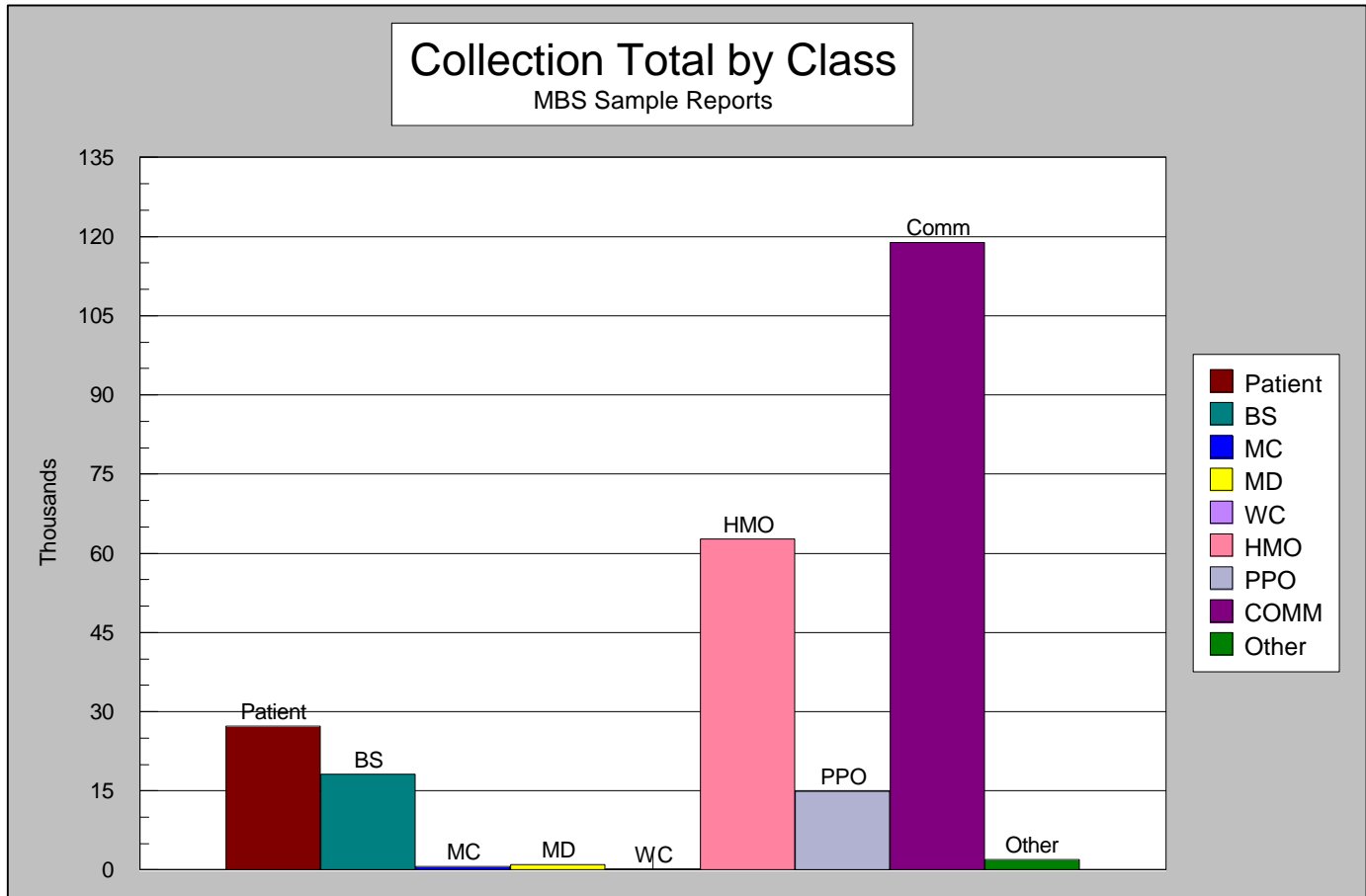
\* Note: Combined into "Other" for Charts



Class	Collections	Percentage
Patient Payment	\$27,295	11.1%
Blue Shield	18,139	7.4%
Medicare	714	0.3%
Medicaid	1,075	0.4%
Workers' Comp.	53	0.0%
HMO	62,707	25.5%
PPO	14,950	6.1%
Commercial	118,911	48.4%
* Champus	188	0.1%
* Dr./Hosp. Billing	0	0.0%
* Collection Agency	1,762	0.7%
* Other	30	0.0%
<b>Total Collections</b>	<b>\$245,824</b>	<b>100.0%</b>



\* Note: Combined into "Other" for Charts



Aging Status	Current	-- 30 --	-- 60 --	-- 90 --	-- 120 --	-- Over --	Balance
Accounts Receivable Amount	\$532,513.84	\$259,010.80	\$164,180.07	\$92,903.89	\$56,625.94	\$128,331.99	\$1,233,566.53
Accounts Receivable Percent	43%	21%	13%	8%	5%	10%	100%

